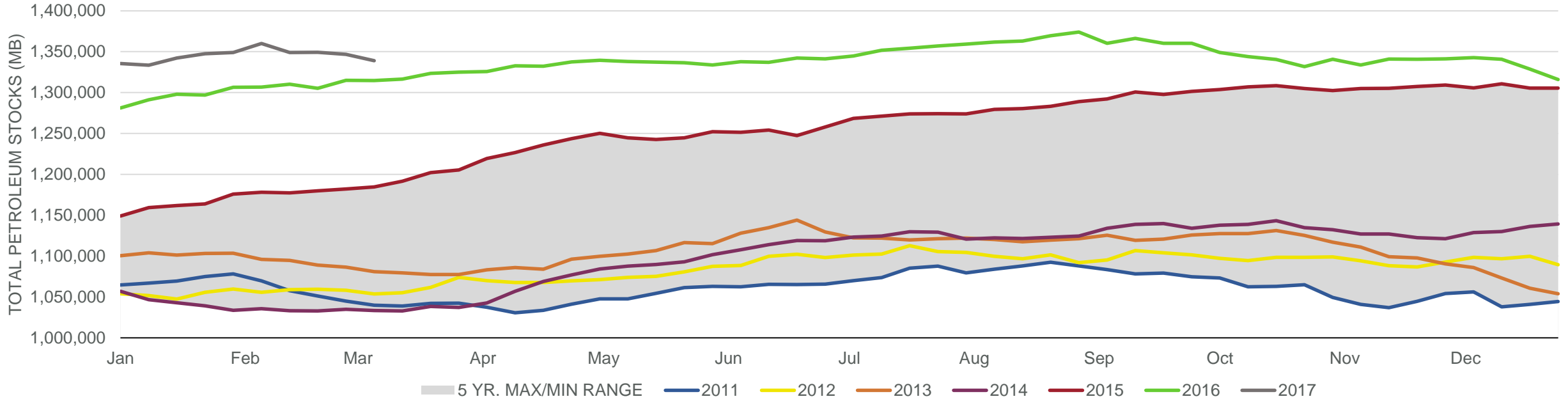
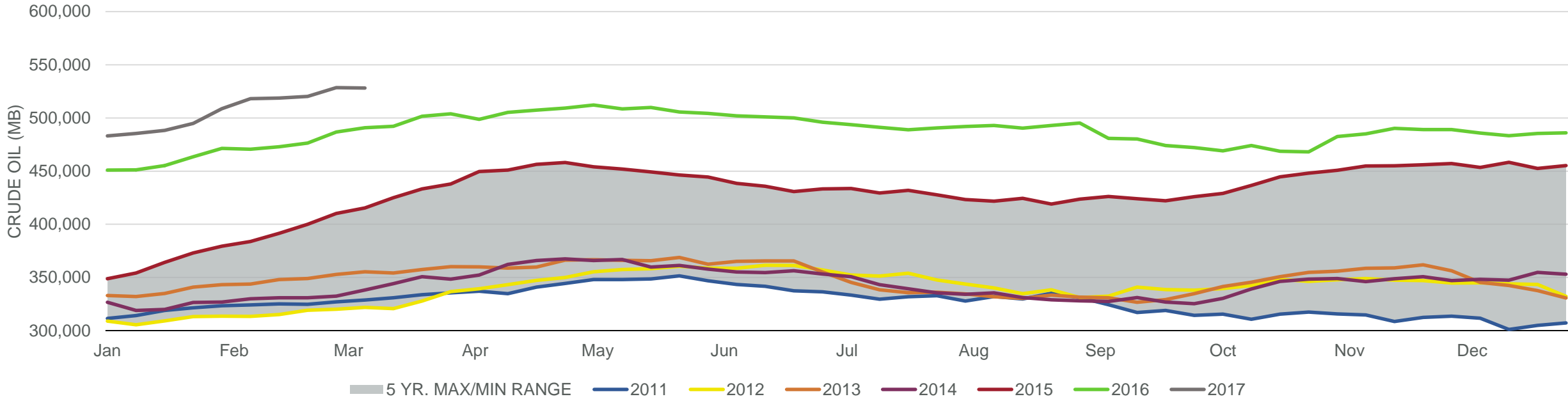


## Total Petroleum Stocks



Week Ending	WTI	Change	GC Gaso	Change	NY No 2	Change	Crude	Change	Gasoline	Change	Distillate	Change	Kero	Change	Resid	Change	Total Stocks	Change
2/10/2017	\$52.88	(\$0.45)	\$1.54	(\$0.01)	\$1.55	\$0.01	518,119	9,527	259,063	2,846	170,057	(689)	43,150	2,565	39,711	(1,321)	1,359,941	11,054
2/17/2017	\$53.22	\$0.34	\$1.54	(\$0.01)	\$1.55	\$0.00	518,683	564	256,435	(2,628)	165,133	(4,924)	44,282	1,132	37,811	(1,900)	1,348,927	(11,014)
2/24/2017	\$54.03	\$0.80	\$1.54	\$0.01	\$1.57	\$0.02	520,184	1,501	255,889	(546)	164,208	(925)	44,561	279	38,278	467	1,349,207	280
3/3/2017	\$53.56	(\$0.46)	\$1.55	\$0.01	\$1.57	\$0.00	528,393	8,209	249,334	(6,555)	161,532	(2,676)	44,179	(382)	39,512	1,234	1,346,825	(2,382)
3/10/2017	\$50.50	(\$3.06)	\$1.51	(\$0.04)	\$1.52	(\$0.05)	528,156	(237)	246,279	(3,055)	157,303	(4,229)	42,059	(2,120)	39,144	(368)	1,338,993	(7,832)

## Commercial Crude Oil Stocks



Week Ending	WTI	Change	Production	Change	Imports	Change	Exports	Change	Capacity	Inputs	Change	Utilization	Crude Oil Stocks	Change
2/10/2017	\$52.88	(\$0.45)	8,977	(1)	8,491	(881)	1026	459	18,125	15,458	(435)	85.4%	518,119	9,527
2/17/2017	\$53.22	\$0.34	9,001	24	7,286	(1,205)	1211	185	18,125	15,271	(187)	84.3%	518,683	564
2/24/2017	\$54.03	\$0.80	9,032	31	7,589	303	721	(490)	18,125	15,664	393	86.0%	520,184	1,501
3/3/2017	\$53.56	(\$0.46)	9,088	56	8,150	561	897	176	18,125	15,492	(172)	85.9%	528,393	8,209
3/10/2017	\$50.50	(\$3.06)	9,109	21	7,405	(745)	717	(180)	18,125	15,472	(20)	85.1%	528,156	(237)