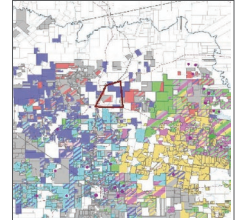


DI COURTHOUSE

STOP SEARCHING FOR PROPERTY RECORDS AT THE COURTHOUSE. FIND THEM FROM YOUR DESKTOP IN MINUTES.

You no longer have to use antiquated index books to source documents. With DI Courthouse you leverage immediate, 24/7 access to detailed digital property records to find opportunities faster.

Drillinginfo enables you to be up to 50% more efficient by cutting your time and expenses in half, allowing you to stay in front of the competition. Deliver high-value expertise faster, and more profitably by focusing on negotiation and opportunities instead of wasting time searching for information.



DI Courthouse makes it easy to select a package tailored to your needs, with two unique offerings:

DI COURTHOUSE SUBSCRIPTIONS

- Search, access and print PDF documents for 143 Texas counties
- Unlimited access to all DI Courthouse Counties (non-syndicated)
- Access records for 29 counties back to sovereignty

DI COURTHOUSE SYNDICATED COUNTIES

- Search, access, and view records that are indexed to the abstract for a more refined and detailed record search with astringent QC and validation guidelines
- Search a survey, section, lot, or block to find the documents pertaining to your area of interest
- Access records for 15 counties scanned and indexed to the abstract

Drillinginfo carefully digitizes, categorizes, and indexes records to enable powerful search and management capabilities.

Pinpoint the exact information you need and view detailed instrument data quickly and simply, with

precise searches across a variety of record types such as Abstracts of Judgment, Deeds and Deeds of Trust, District Court Records, Federal Tax Liens, Grantor/Grantee records, Mechanics Liens, Lis Pendens, Probates, State Tax Liens, and Title Plants by Abstract (search by name, abstract number, subdivision, or lot and block).

Searchable, Indexed Digital Records

DI Courthouse currently includes documents from more than 143 Texas counties, and coverage is expanding continually to add new counties and states. Coverage often spans many decades, and for 29 counties, documents are available going back to sovereignty.

Research Made Easy

As you review documents in DI Courthouse, compiling relevant information is as simple as sending selected results to your customized runsheet. Maintain as many runsheets as you like and easily update or share them. DI Courthouse was designed specifically for the real-world research needs of a variety of users from field and in-house landmen, to prospect geologists, division order analysts, oil and gas attorneys, and mineral owners and investors.

Feature	Benefit
Create Digital Runsheets ^{1,2}	Group all relevant documents together to easily update and share them
Search using Digital Index ^{1,2}	Drillinginfo scans original documents and carefully categorizes and indexes records to enable powerful search capabilities. Pinpoint the exact information needed and view detailed data quickly. Reduces number of searches
Robust QC Process ¹	Deliver better quality of data
Search using Geographic Location ¹	Search for relevant title information quicker
Mineral Title ¹	Records for all counties back to sovereignty and indexed using property descriptions. Search a survey, section, lot, or block to find all relevant property records
Records back to Sovereignty ²	29 counties scanned and indexed back to sovereignty
Search by Prior Reference ¹	Instantly link back to original source deeds; Also able to vet completed run sheets for any missed or outlying documents

¹Syndicates; ²Subscriptions

DI Courthouse Subscription Texas Counties Updated Q32015

Anderson	Angelia	Aransas	Archer	Atascosa	Bandera	Bastrop	Bee
Bexar	Bosque	Brazos	Brown	Burleson	Caldwell	Cameron	Cass
Chambers	Cherokee	Clay	Cochran	Coke	Coleman	Colorado	Comanche
Cooke	Coryell	Crane	Culberson	Dawson	Denton	Dewitt	Dimmit
Eastland	Ector	Edwards	El Paso	Ellis	Erath	Fayette	Fisher
Fort Bend	Franklin	Freestone	Frio	Gaines	Galveston	Garza	Glasscock
Gonzales	Grayson	Gregg	Grimes	Guadalupe	Hardin	Harrison	Haskell
Hemphill	Henderson	Hill	Hockley	Hood	Hopkins	Houston	Howard
Hudspeth	Irion	Jack	Jackson	Jasper	Jefferson	Jim Hogg	Jim Wells
Johnson	Jones	Karnes	Kleberg	La Salle	Lavaca	Lee	Leon
Liberty	Limestone	Lipscomb	Live Oak	Loving	Lubbock	Madison	Marion
Martin	Maverick	McLennan	McMullen	Midland	Milam	Mitchell	Montgomery
Morris	Nacogdoches	Navarro	Newton	Nolan	Nueces	Orange	Palo Pinto
Panola	Parker	Polk	Presidio	Reagan	Real	Reeves	Refugio
Robertson	Runnels	Rusk	Sabine	San Augustine	San Patricio	Schleicher	Scurry
Shelby	Smith	Somervell	Stephens	Tarrant	Throckmorton	Tom Green	Tyler
Upshur	Upton	Val Verde	Van Zandt	Victoria	Ward	Washington	Webb
Wharton	Wilson	Winkler	Wise	Wood	Yoakum	Young	

DI Courthouse Syndicated Texas Counties Updated Q22016

Andrews	Glasscock	Howard	Madison	Pecos	Robertson	Ward
Crane	Grimes	Leon	Martin	Reagan	Upton	Winkler
Crockett	Houston	Loving	Midland	Reeves	Walker	Eddy, NM



PROACTIVE



EFFICIENT



COMPETITIVE

By monitoring the market, Drillinginfo continuously delivers innovative oil & gas solutions that enable our customers to sustain a competitive advantage in any environment.

Drillinginfo customers constantly perform above the rest because they are more efficient and more proactive than the competition.